

X3Cube Snapshot (Document Engine)

Document Engine 4

Document Engine 4 is the latest iteration of the premier document management solution from X3Cube. Specify exactly who can see or edit content, document by document. Build complex folder structures to reflect your management needs. Document Engine is the oldest dedicated document management solution purely designed for DNN. This latest version builds on 6 years of experience, not only delivering a solid and stable DNN module, but also making complex document centric SaaS solutions using DNN and Document Engine as a base platform.

Document Engine has been bought by organizations large and small from all trades. These include health care, legal, industry, government and military. Document Engine can be found on servers on 6 of the 7 continents (we're still waiting for the first customer from Antarctica). There are customers in South Africa, New Zealand, Costa Rica, Hungary and Singapore. We aim to deliver the platform in all major languages, free of charge.

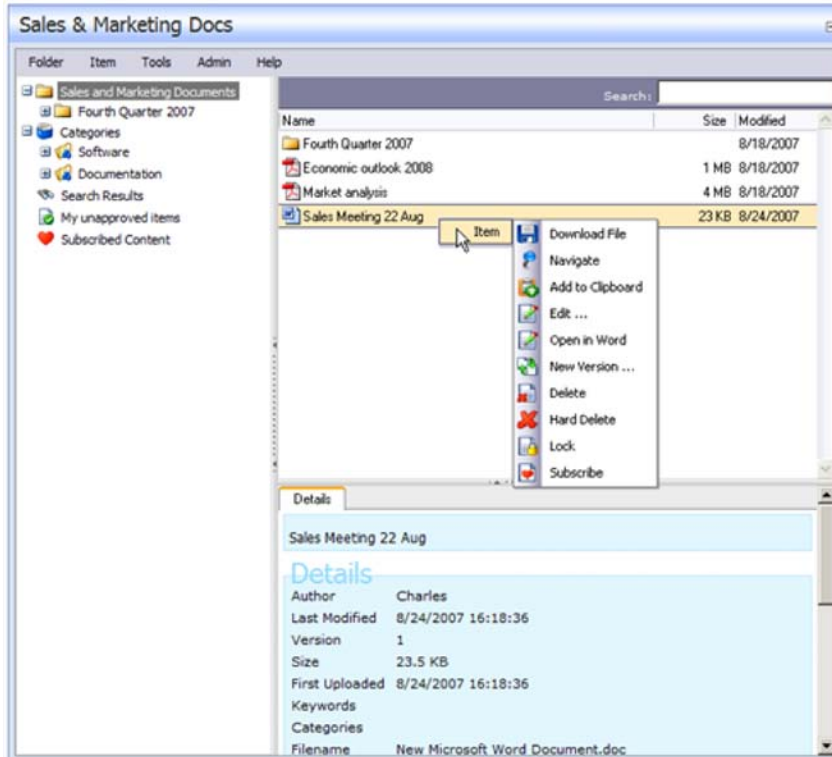
Document Engine is very complete. Out of the box there is not much you could wish for to start a comprehensive document management system. There are no necessary additional modules to buy before unleashing the power of this system.

At X3Cube we focus on Document Management. We take interest in your specific document needs. We aim to be the best, today, tomorrow and after. To do that, we keep looking to improve the performance, stability and feature set of this appliance.

Core Features

- Rich UI using Ajax technologies

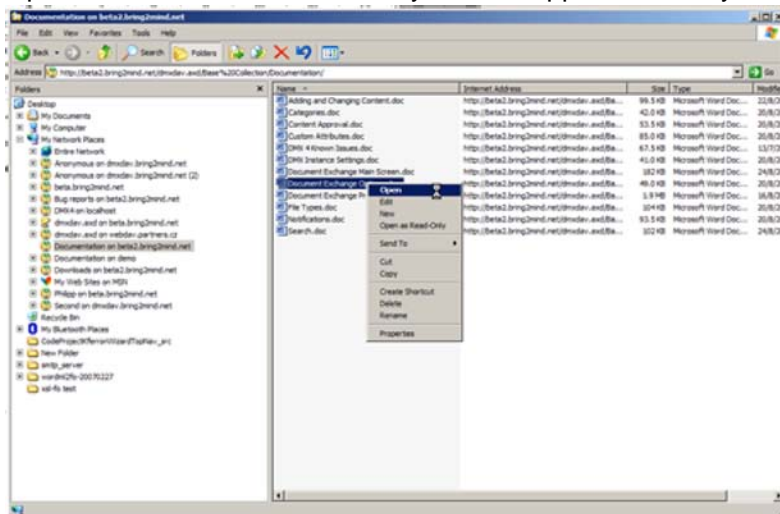
The user interface shows the folder structure, the files, and details of those files all in one comprehensive view similar to what people are used to using the Windows Explorer or Outlook.



- Per item role and user based security
Every document or folder has permissions set for both roles and/or individual users.



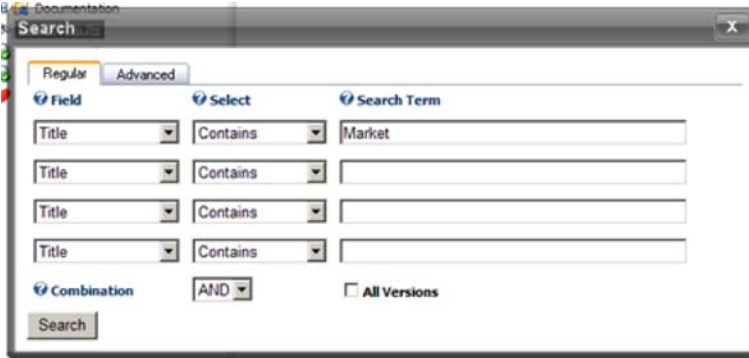
- Versioning of documents
The user specifies how many versions of a document must be preserved before they are deleted.
- Advanced security to prevent unauthorized direct access
Files are obfuscated and stored in a way that makes it impossible for them to be downloaded directly.
- Direct editing of content through WebDAV
Open and save documents directly in client applications on your own PC using WebDAV.



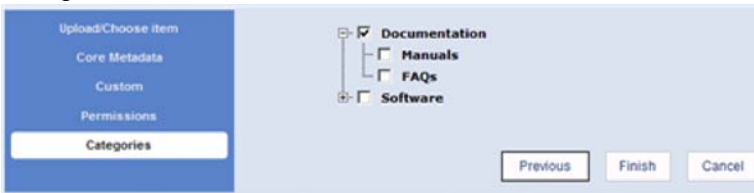
- Portal-wide sharing of content
Content in Document Engine can be made to show at different places in the portal. Each Document Engine module acts as a virtual drive looking at one big underlying folder structure that is shared across the portal. This makes very advanced applications possible.
- Upload of very large (up to 2GB) files
Document Engine includes a component that will allow the user to upload large files by streaming directly to hard disk instead of server memory.



- Search of both meta-data and content
Use Document Engine to search documents and their contents.



- Categorization



- Custom attributes

Add your own specific attributes to items.



- Notifications

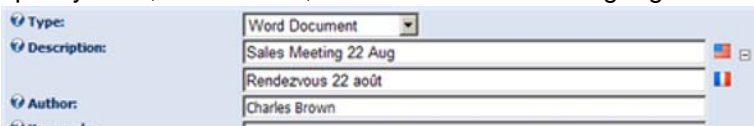
Subscribe to content so you will be notified by email in case of changes.

- Batch download

Select a number of files and/or folders and the contents will be zipped and sent for download

- Multilingual features

Document Engine is one of the first modules to implement content localization. The user may specify titles, for instance, for items in different languages.



- Unique extensible architecture

Document Engine was designed with extensibility in mind. We specialize in delivering custom solutions based on Document Engine using these features. Let us know what your needs are

and we'll give you an indication on the possibilities using Document Engine as a platform for document centric solutions.

Requirements

- DNN 4
For Document Engine version 04.00.00 you'll need to run at least version 04.05.03 of DotNetNuke
- IIS 6 (Windows 2003) or higher
You can run Document Engine on IIS 5 (Windows XP) but it won't be able to run WebDAV features
- Trust level: Medium or Full (preferred)
The upload component used to permit upload of large files needs Full trust to operate. If the application is not running Full Trust, then Document Engine will default to a regular Asp.net upload control.
- SQL Server 2005
- Support for ActiveX in browser client when using WebDAV straight from browser interface. In practice this means using IE.

Activation

Document Engine needs to be activated to work across a network. It does not need activation if used locally (i.e. when addressed through <http://localhost/> or <http://127.0.0.1/>). The latter will permit most developers to set up test sites on their own machine and try the module out.

If you feel at any time you should be permitted to activate at more DNN installations, don't hesitate to contact us. The policy at X3Cube is that first and foremost you should have a working module. The mechanism is just there to prevent illegal and/or 'unconscious' spreading of the software. It is not meant to hinder you in any way.